

Brighton Park

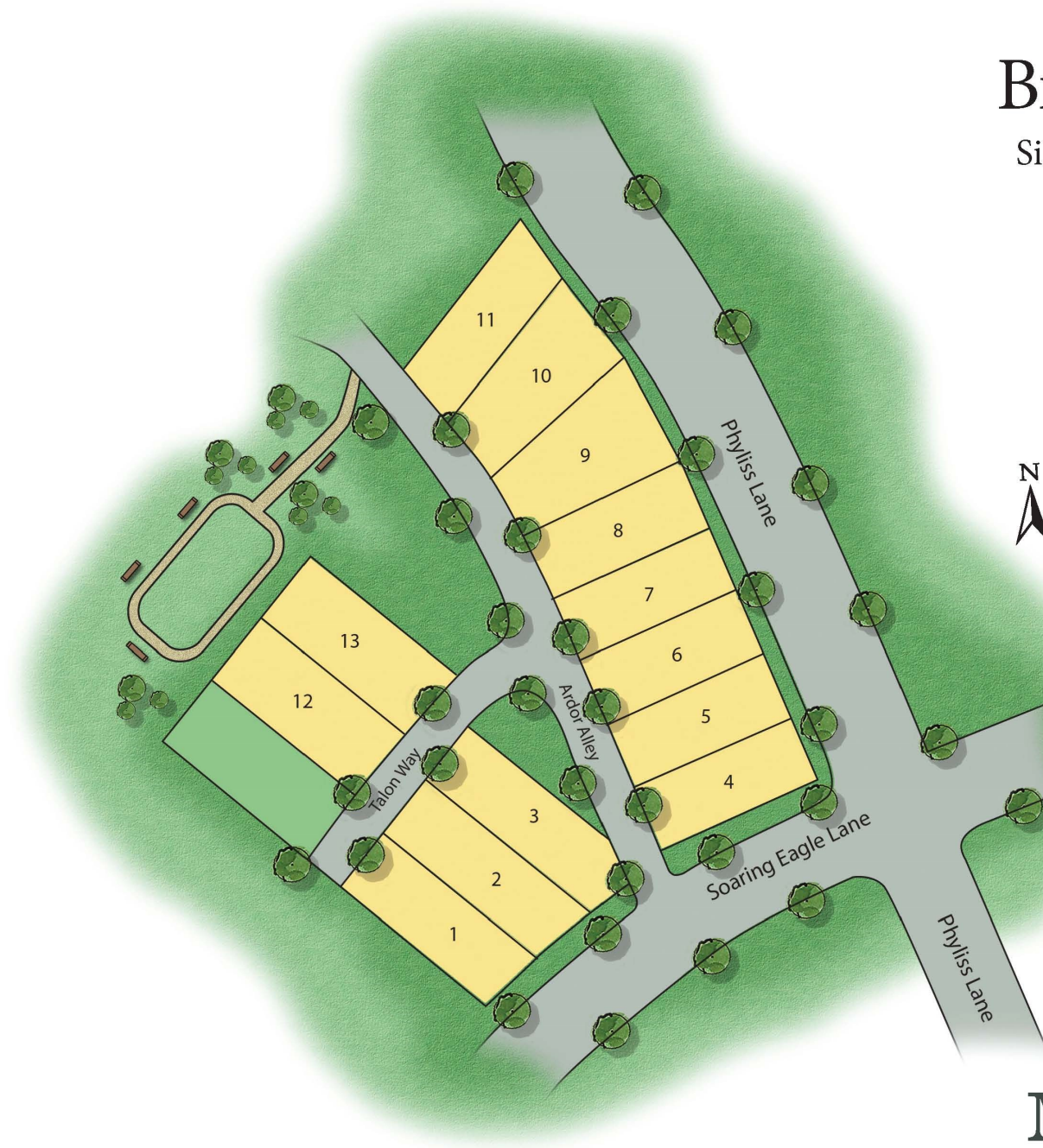
Single Family Homesites

MINT HILL, NC

***Single Family Homes in an
incredibly walkable community!***

This desirable Mint Hill location is close to numerous shops and restaurants. For a quick commute, you'll enjoy easy access to I-485 as well.

Meeting Street offers spacious, two-story layouts, many with the master down, and a two-car garage. Inside your new Meeting Street home you'll find plenty of room for entertaining and all the right finishes.



Siteplan subject to change.



Meeting Street®

HOMES & COMMUNITIES



Included Features - *Masters Series*

INTERIOR FEATURES

- ◆ Smooth finished **9 foot** ceilings
- ◆ **Tile** in the laundry, master bath and bath 2
- ◆ **Shaw** continuous filament nylon carpet with 5.5lb pad
- ◆ Ventilated shelving in closets
- ◆ Smooth two-panel square top interior doors
- ◆ **Dexter** satin nickel door hardware with matching hinges
- ◆ **Savoy House** lighting or generous lighting allowance
- ◆ **Wood floors** in foyer, powder bath and kitchen
- ◆ **Wood open railing** on the first floor.
- ◆ **5.25"** Single piece cove crown molding in principle living area 1st floor
- ◆ Cased windows
- ◆ **5.25"** tall baseboard through-out home

EXTERIOR FEATURES

- ◆ **James Hardie ColorPlus** exterior siding
- ◆ Architectural asphalt shingles with 30 year manufacturer's limited warranty
- ◆ Two exterior hose bibs
- ◆ Dead bolt locks on all house exterior doors
- ◆ Drywall finished garages
- ◆ Professionally designed landscape package
- ◆ Brick to grade foundation
- ◆ Front porches per plan
- ◆ Fenced-in courtyard, 4 foot black aluminum picket fencing
- ◆ Fully sodded yard

ELECTRICAL FEATURES

- ◆ Low-voltage prewiring for four outlets (use for data, cable or phone)
- ◆ Two exterior waterproof receptacles
- ◆ GFI receptacles in wet areas
- ◆ Smoke detectors & carbon monoxide detector (per code)

KITCHEN FEATURES

- ◆ **Timberlake** 36" maple cabinets with castling.
- ◆ **Granite** countertops with tile backsplash
- ◆ Under mount stainless steel sink in kitchen
- ◆ **Delta** chrome faucet with pull-out sprayer
- ◆ **GE Appliances** -
 - Smooth top black cook top
 - Black oven/microwave combo
 - Multi-cycle black dishwasher
 - Non-vented black range hood
- ◆ Garbage disposal
- ◆ Icemaker connection line



BATH FEATURES

- ◆ **Delta Woodhurst** chrome faucets in all baths
- ◆ **Tile shower** in master bath with **tile mud pan**
- ◆ Fiberglass tub & shower w/ molded-in shelves and/or ledges in 2nd bath
- ◆ **Sterling** pedestal sink in the powder room (per plan)
- ◆ Cultured marble vanity tops with under mount sink in master and 2nd baths
- ◆ Framed mirror in powder bath
- ◆ 42" high mirror over vanity cabinets in full bathrooms
- ◆ Adult height vanities throughout

ENERGY EFFICIENT FEATURES

- ◆ **Lennox** gas hot air & air conditioning
- ◆ Separate HVAC zone for each floor
- ◆ Energy efficient insulation
- ◆ Water conserving **Sterling** toilets in all bathrooms
- ◆ 50 gallon energy efficient gas water heater
- ◆ **DuPont Tyvek** house wrap
- ◆ **Delta** low-flow faucets & shower heads
- ◆ Energy efficient fiberglass front entry door
- ◆ Energy saving low E vinyl windows

PERSONALIZED FEATURES

- ◆ **2-10 Home Buyers Warranty**
 - 10-Year** limited structural warranty
 - 2-Year** system coverage
 - 1-Year** workmanship coverage
- ◆ Pre-Construction, Pre-Drywall, New Home Orientation and Final Inspection with your Personal Builder
- ◆ 60 day service checkup and 11 month service checkup
- ◆ Personal appointment with a decorator at our design center with an elaborate selection of options available

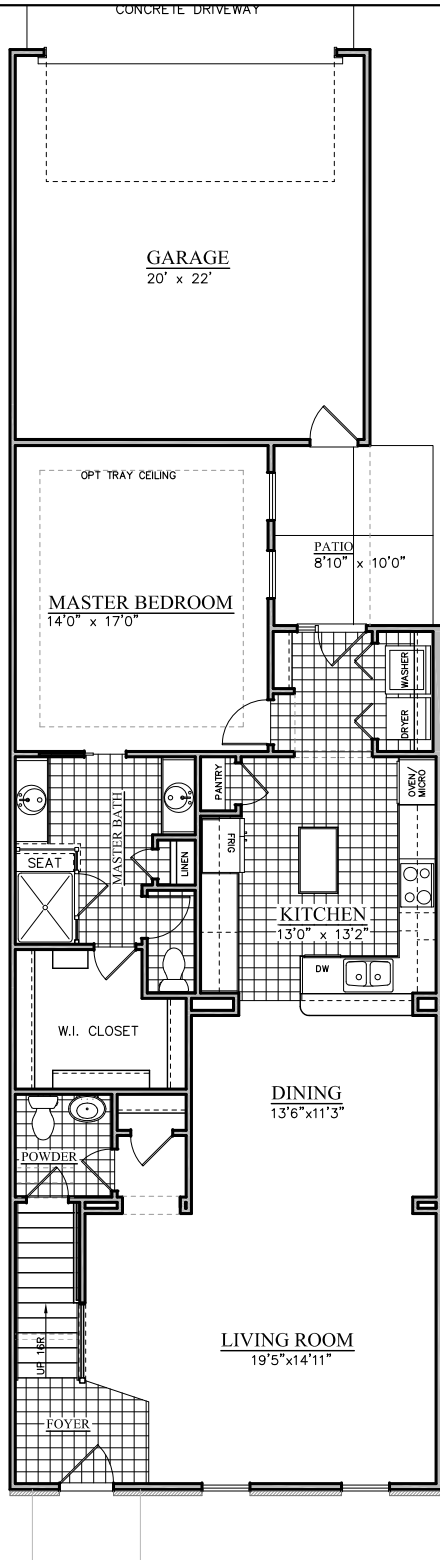
A limited selection of optional and upgrade items are available. Meeting Street reserves the right to substitute materials, appliances or equipment which are substantially equivalent to those listed here. The Model Home includes special decorative upgrades and features that are not included in the Base price of the home. Seller is not responsible for amenities planned therein, and any illustrations or representations regarding improvements are subject to change. Meeting Street Homes & Communities features subject to change without notice.



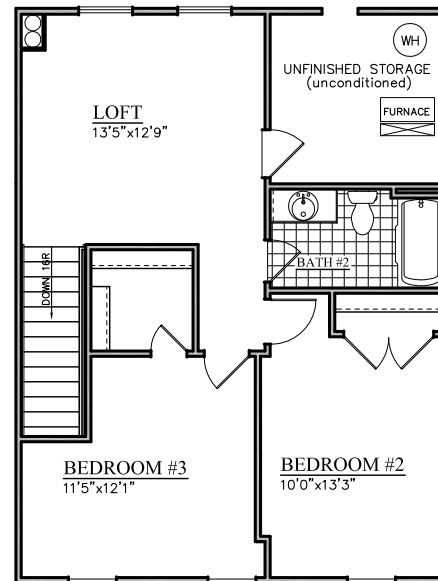
Phone 704-714-0600
Email: BrightonPark@meetingstreet.net
www.meetingstreet.net

Exclusively listed by:



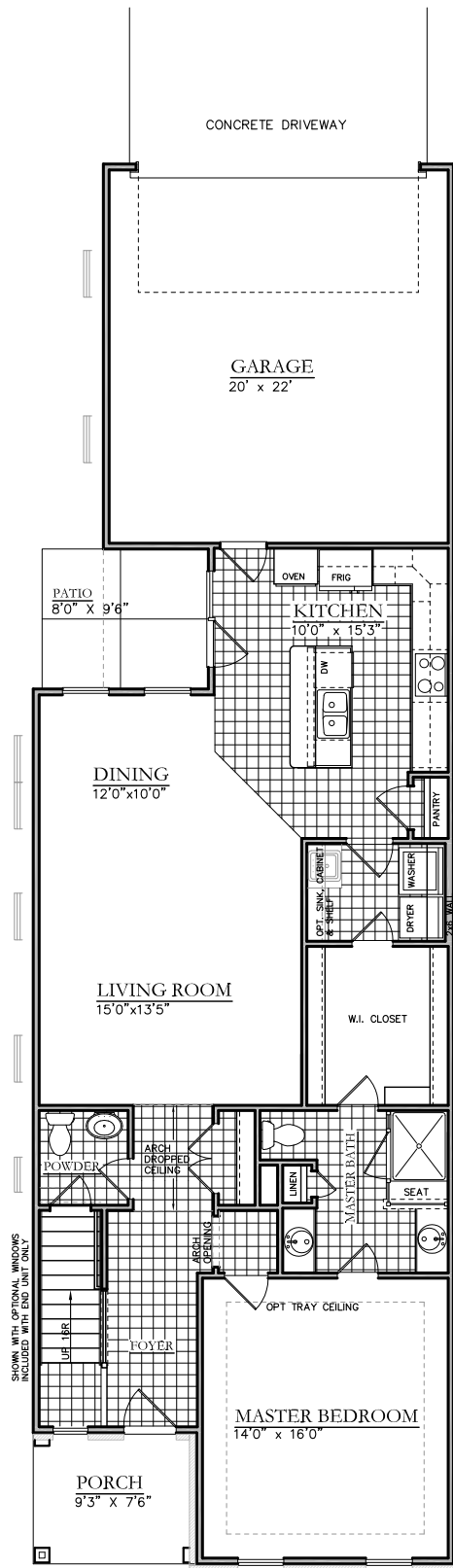


1ST FLOOR

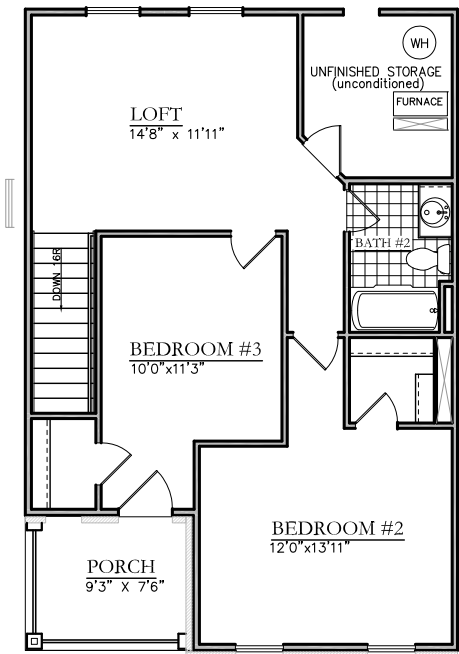


2ND FLOOR

Prices, plans, dimensions, specifications, materials and availability are subject to change without notice and completed improvements may differ from illustrations. artist's renderings are conceptual and may include options/upgrades such as dormers, planter boxes,proches, etc. and may illustrate roof lines which will vary due to site conditions. This does not constitute an offer to sell real property in any jurisdictions where prior registration or other advance qualifications of real property is required. Broker participation is welcome.
Copyright 2005 Meeting Street Companies, LLC. Meeting Street and the Meeting Street logo are registered trademarks of Meeting Street Companies, LLC.



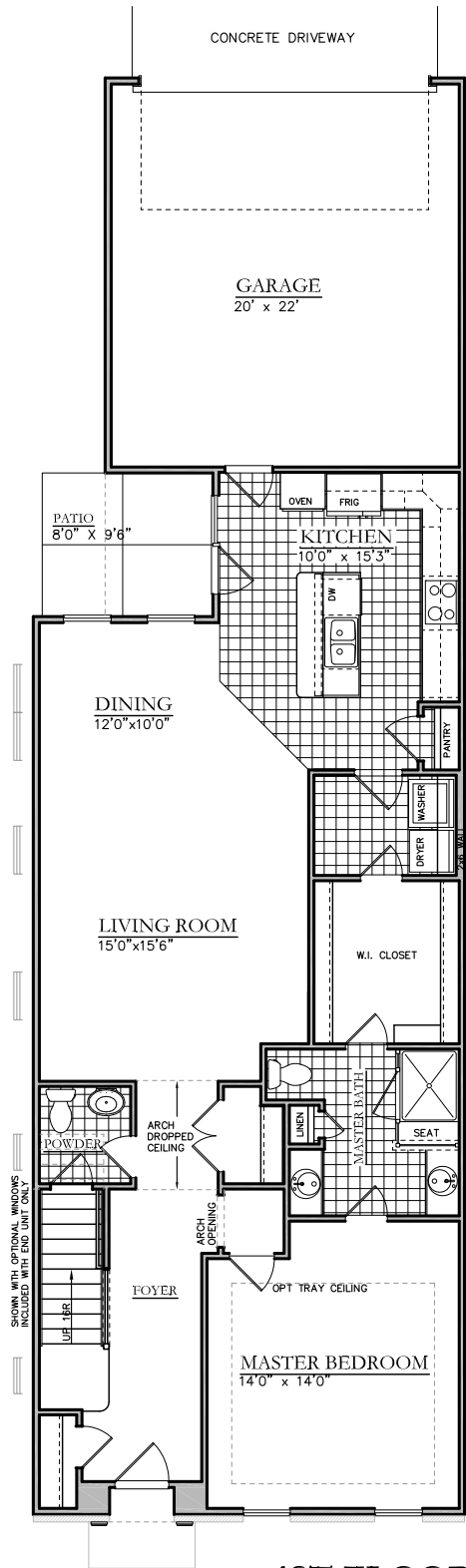
1ST FLOOR



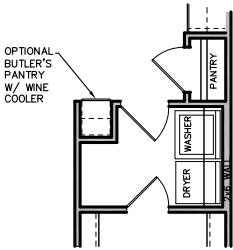
2ND FLOOR

Prices, plans, dimensions, specifications, materials and availability are subject to change without notice and completed improvements may differ from illustrations. artist's renderings are conceptual and may include options/upgrades such as dormers, planter boxes,proches, etc. and may illustrate roof lines which will vary due to site conditions. This does not constitute an offer to sell real property in any jurisdictions where prior registration or other advance qualifications of real property is required. Broker participation is welcome.

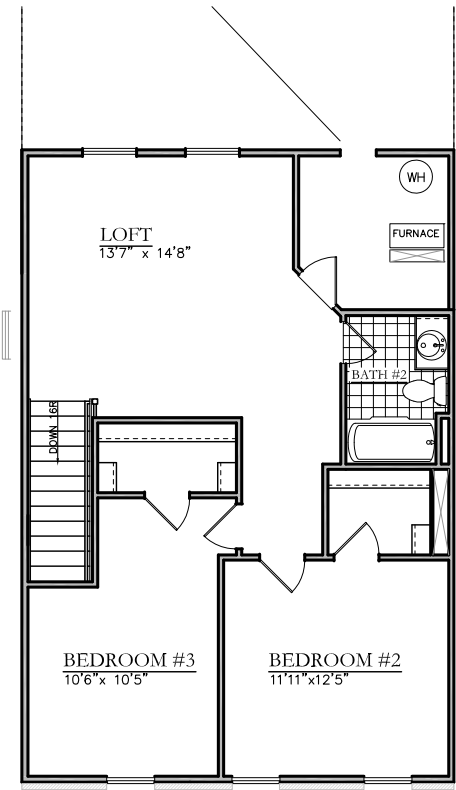
Copyright 2005 Meeting Street Companies, LLC. Meeting Street and the Meeting Street logo are registered trademarks of Meeting Street Companies, LLC.



1ST FLOOR



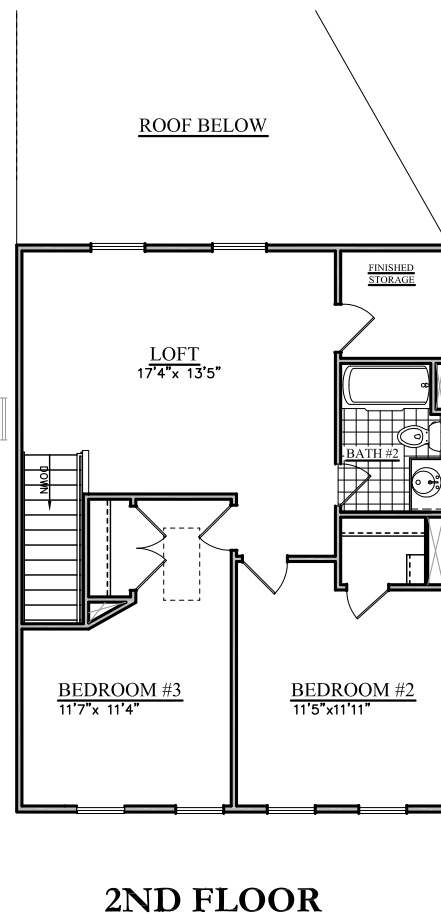
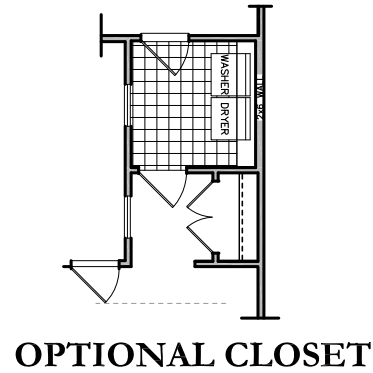
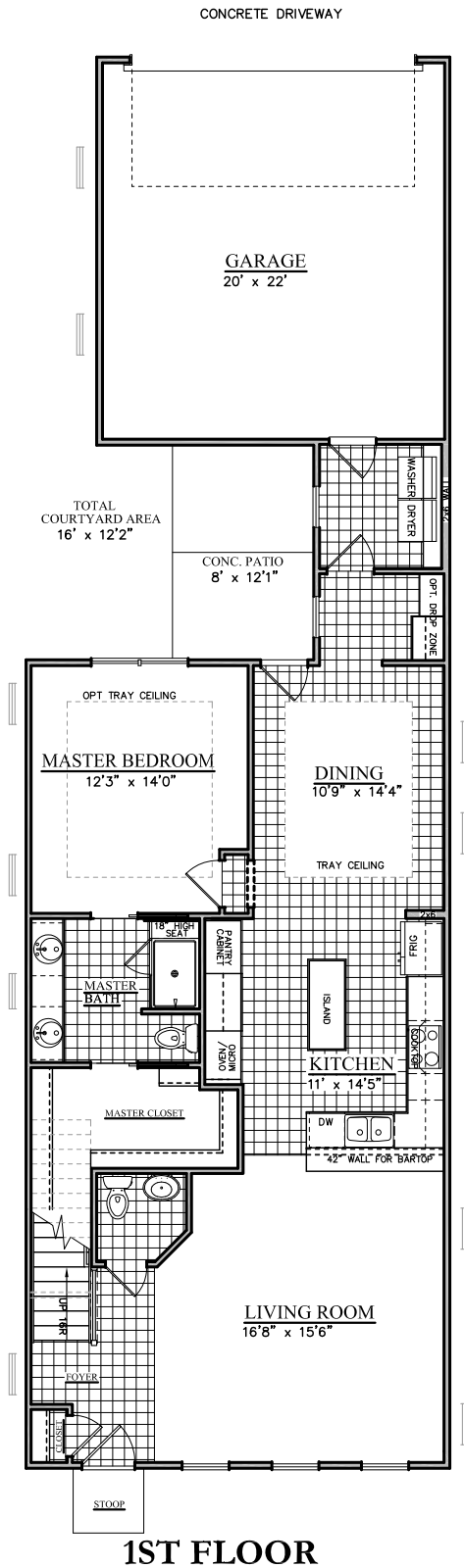
OPTION



2ND FLOOR

Prices, plans, dimensions, specifications, materials and availability are subject to change without notice and completed improvements may differ from illustrations. artist's renderings are conceptual and may include options/upgrades such as dormers, planter boxes,proches, etc. and may illustrate roof lines which will vary due to site conditions. This does not constitute an offer to sell real property in any jurisdictions where prior registration or other advance qualifications of real property is required. Broker participation is welcome.

Copyright 2005 Meeting Street Companies, LLC. Meeting Street and the Meeting Street logo are registered trademarks of Meeting Street Companies, LLC.



Prices, plans, dimensions, specifications, materials and availability are subject to change without notice and completed improvements may differ from illustrations. Artist's renderings are conceptual and may include options/upgrades such as dormers, planter boxes, porches, etc. and may illustrate roof lines which will vary due to site conditions. This does not constitute an offer to sell real property in any jurisdictions where prior registration or other advance qualifications of real property is required. Broker participation is welcome.

Copyright 2005 Meeting Street Companies, LLC. Meeting Street and the Meeting Street logo are registered trademarks of Meeting Street Companies, LLC.



Meeting Street®

HOMES & COMMUNITIES

More than just a *place* to live...it's a *way* to live.

Meeting Street Homes & Communities was founded by Joe Roy in 1996 to bring custom attention to all aspects of a community through an innovative manufacturing process. Classic architectural details, typically found in only the finest custom homes, are now available at an affordable price.

What's more, at Meeting Street Homes & Communities, we don't just build homes, we create beautiful, walkable communities. For this reason, you won't find a Meeting Street home just anywhere. The way you live, and how your home and community can promote that active lifestyle, are all part of our planning process. From our architectural style and beautiful streetscapes to our quality finishes and classic design touches, your Meeting Street home is built to stand the test of time and be one less thing on your mind.



Our mission is to create communities with distinguishing marks of quality, blending modern advances with classic styles in superior locations giving our customers a sense of belonging, pride and easy access to the active lifestyles they lead.



Meeting Street®

HOMES & COMMUNITIES

Community Locations

Davidson



Ambleside
from the mid \$600s
Single Family
Homes

Concord



**The Villas
at Tucker's Walk**
from the upper \$200s
Townhomes

Charlotte



**Meeting Street Towns
at Seigle Point**
from the mid \$300s
Townhomes

Mint Hill



Brighton Park
from the mid \$300s
Single Family
Homes

